

VE 906

Technical Info

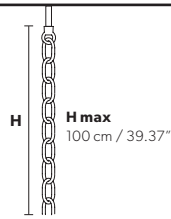
MASIERO

Design by: Masiero Lab

MARIA TERESA VE906



Standard chain



MT/CG



MT
Traditional version
CG
Coloured glass version

LIGHTING Traditional E14 lightbulbs
SIZE With lampshades, overall diameter is 5 cm (2") larger than specified
FRAME **MT** Chrome or gold plated metal covered with transparent glass
CG Painted metal covered with painted glass
LAMP SHADES **MT** Organza ORG/14/GR
CG Organza ORG/14/...COLOUR
PENDANTS **MT** Transparent glass
CG Coloured glass

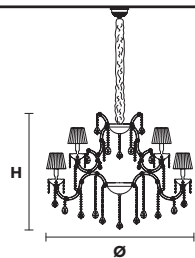
RW/DW



RW
RGB-W Led version
DW
Dynamic White Led version

LIGHTING WHITE LED sources CRI>90
RGB-W each light 330 Nominal lm at 3000K
DW each light 490 Nominal lm at 4700K
SIZE Same size as MT or CG
FRAME Chrome or gold plated metal covered with transparent glass
LAMP SHADES No lampshades included
PENDANTS Transparent glass or crystal

VE 906/15



TECHNICAL INFORMATION

Ø 100 cm / 39.37"
H 78 cm / 30.37"
W 25 kg / 55.11 lb

LIGHTING SYSTEM

STANDARD LIGHTING

15×E14×10 W max (not included).
Triac Dimmable

VERSION



VE 906/15 MT-CG

INTEGRATED LED LIGHTING



15×LED source – 60 W tot
Control system: DMX
On request Radio Control and Masiero Smart Light App only for RW version.

VE 906/15 RW/DW

MT TRADITIONAL



G04 Shiny chrome



G03 Shiny gold

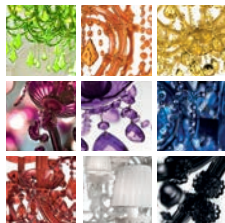
MT DYNAMIC WHITE



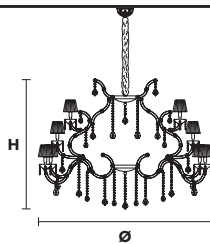
MT RGB - W - LED



MT COLOURED GLASS



VE 906/32



TECHNICAL INFORMATION

Ø 125 cm / 49.21"
H 90 cm / 35.43"
W 40 kg / 88.18 lb

LIGHTING SYSTEM

STANDARD LIGHTING

32×E14×10 W max (not included).
Triac Dimmable

VERSION



VE 906/32 MT-CG

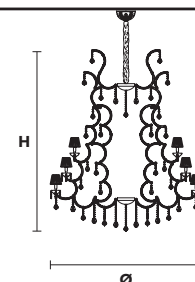
INTEGRATED LED LIGHTING



32×LED source – 128 W tot
Control system: DMX
On request Radio Control and Masiero Smart Light App only for RW version.

VE 906/32 RW/DW

VE 906/42



TECHNICAL INFORMATION

Ø 150 cm / 59.05"
H 180 cm / 70.86"
W 75 kg / 165.34 lb

LIGHTING SYSTEM

STANDARD LIGHTING

42×E14×10 W max (not included).
Triac Dimmable

VERSION



VE 906/42 MT-CG

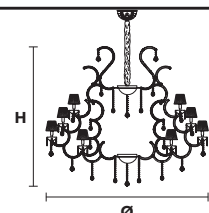
INTEGRATED LED LIGHTING



42×LED source – 168 W tot
Control system: DMX
On request Radio Control and Masiero Smart Light App only for RW version.

VE 906/42 RW/DW

VE 906/49



TECHNICAL INFORMATION

Ø 190 cm / 74.80"
H 170 cm / 66.92"
W 90 kg / 198.41 lb

LIGHTING SYSTEM

STANDARD LIGHTING

49×E14×10 W max (not included).
Triac Dimmable

VERSION



VE 906/49 MT-CG

INTEGRATED LED LIGHTING



49×LED source – 196 W tot
Control system: DMX
On request Radio Control and Masiero Smart Light App only for RW version.

VE 906/49 RW/DW

: for the US market, refer to the relevant price list.